

**SINGLE CIRCUIT
CABLE TRENCH**

**DOUBLE CIRCUIT
CABLE TRENCH**



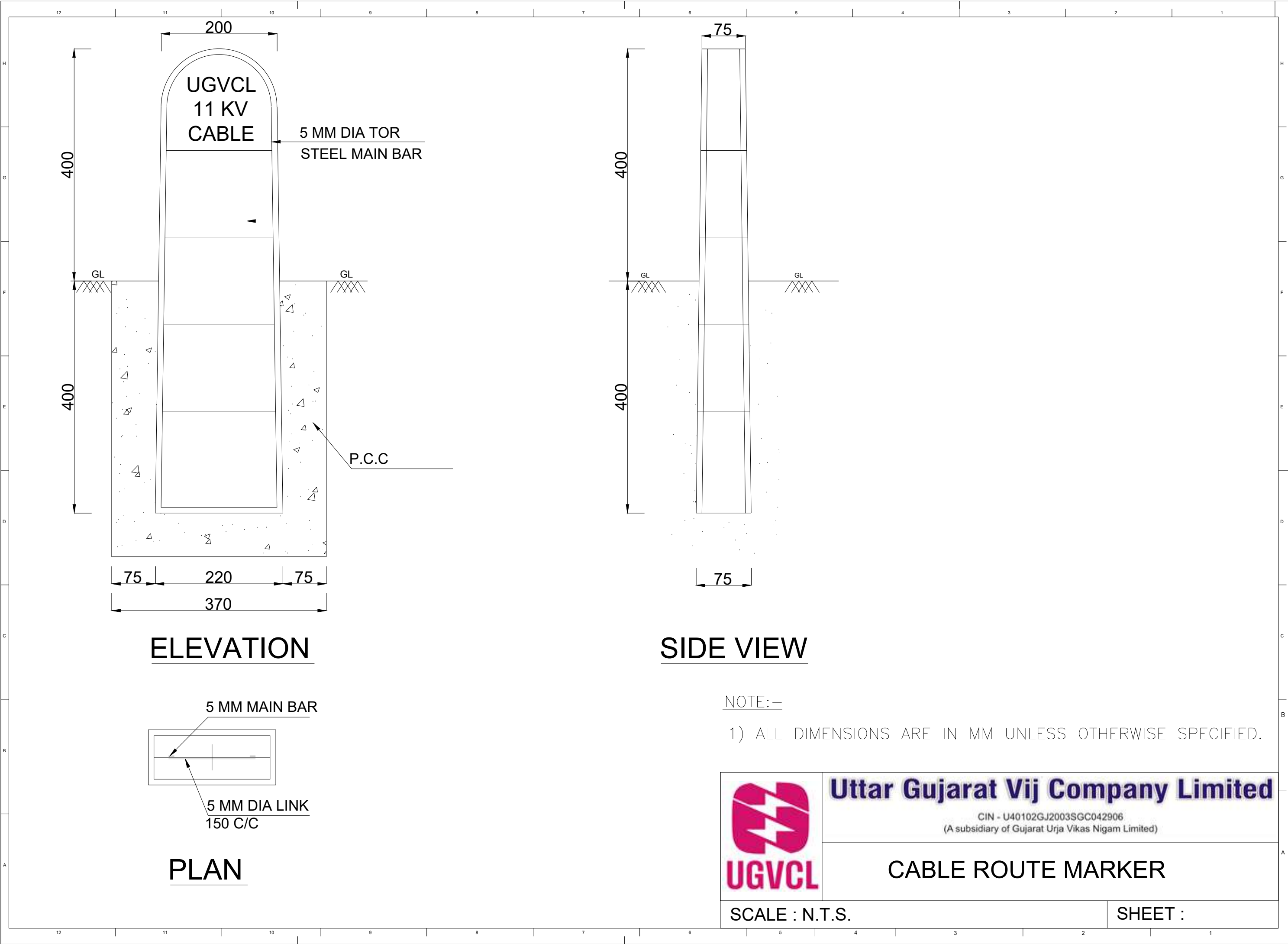
Uttar Gujarat Vij Company Limited

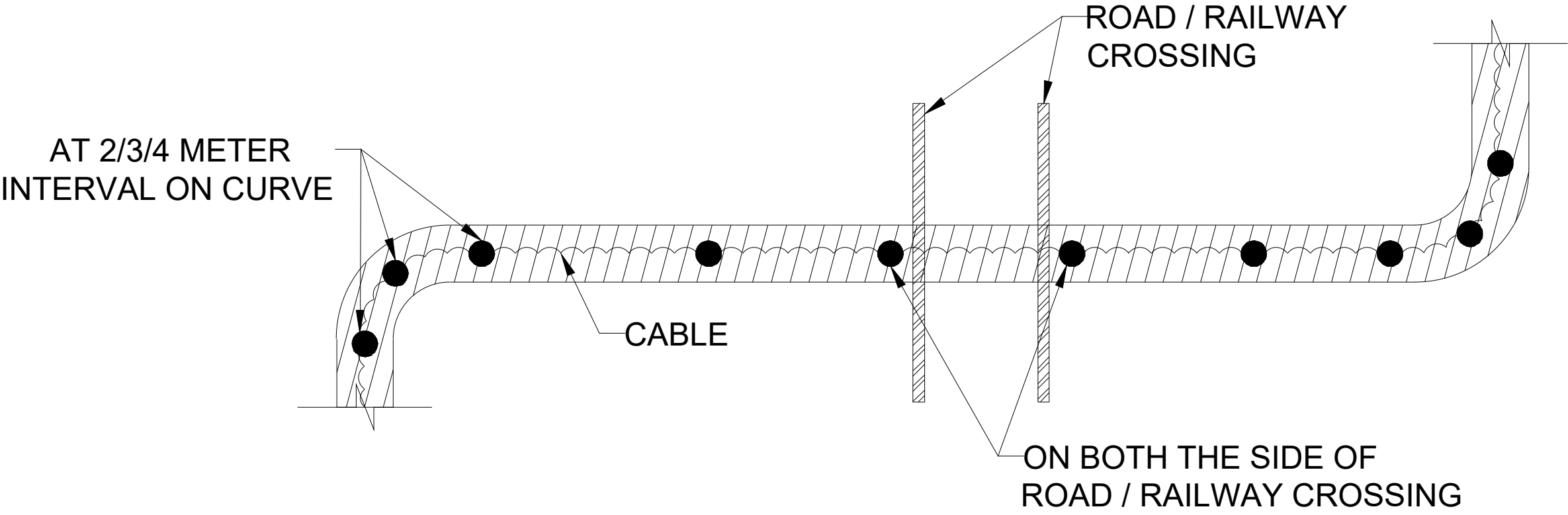
CIN - U40102GJ2003SGC042906
(A subsidiary of Gujarat Urja Vikas Nigam Limited)

CABLE LAYING METHOD

SCALE : N.T.S.

SHEET :








TOP VIEW

ALL DIMENSIONS ARE IN MM

LEGEND :

-  : CABLE
-  : CABLE TRENCH
-  : ROUTE MARKER

ROUTE MARKERS ARE TO BE INSTALLED AT EVERY 50 / 100 METERS LENGTH AS PER SPECIFICATION, DRAWING AND INSTRUCTION OF ENGINEER - IN -CHARGE. HOWEVER, AT CURVE AND ROAD / RAILWAY CROSSING ROUTE MARKERS ARE TO BE INSTALLED AS ABOVE AND SITE SITUATION.



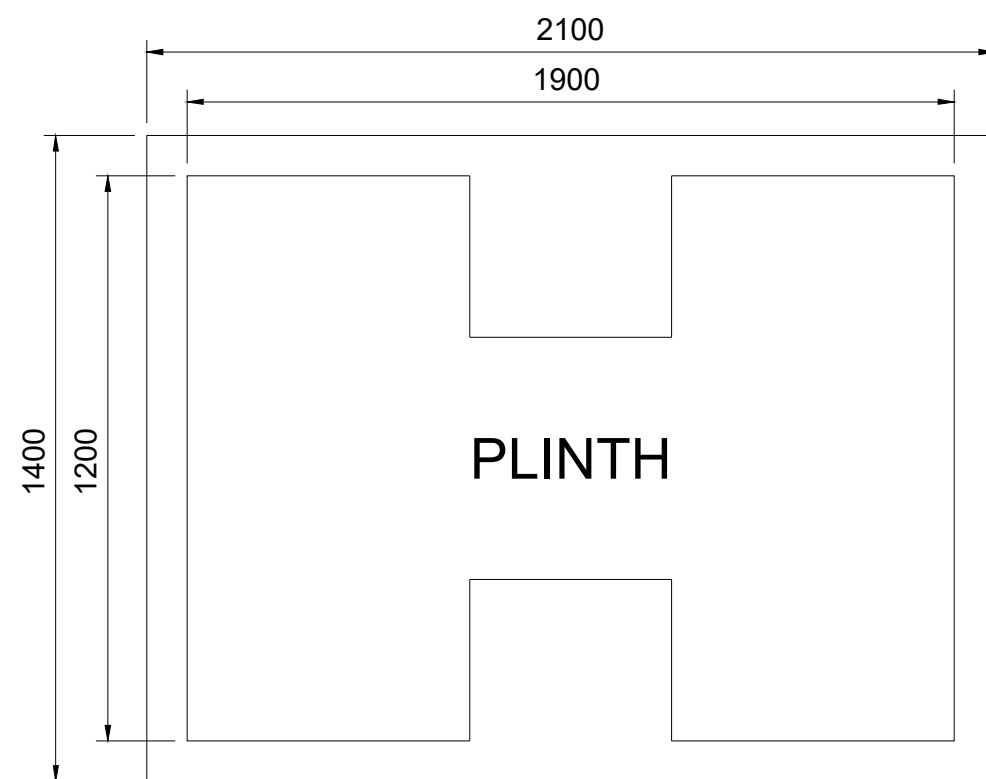
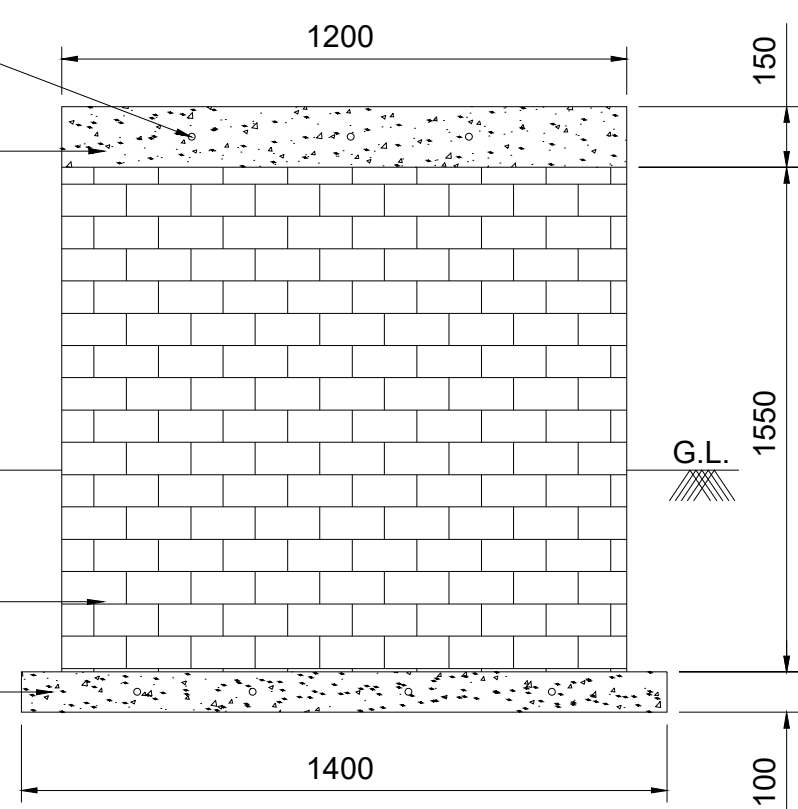
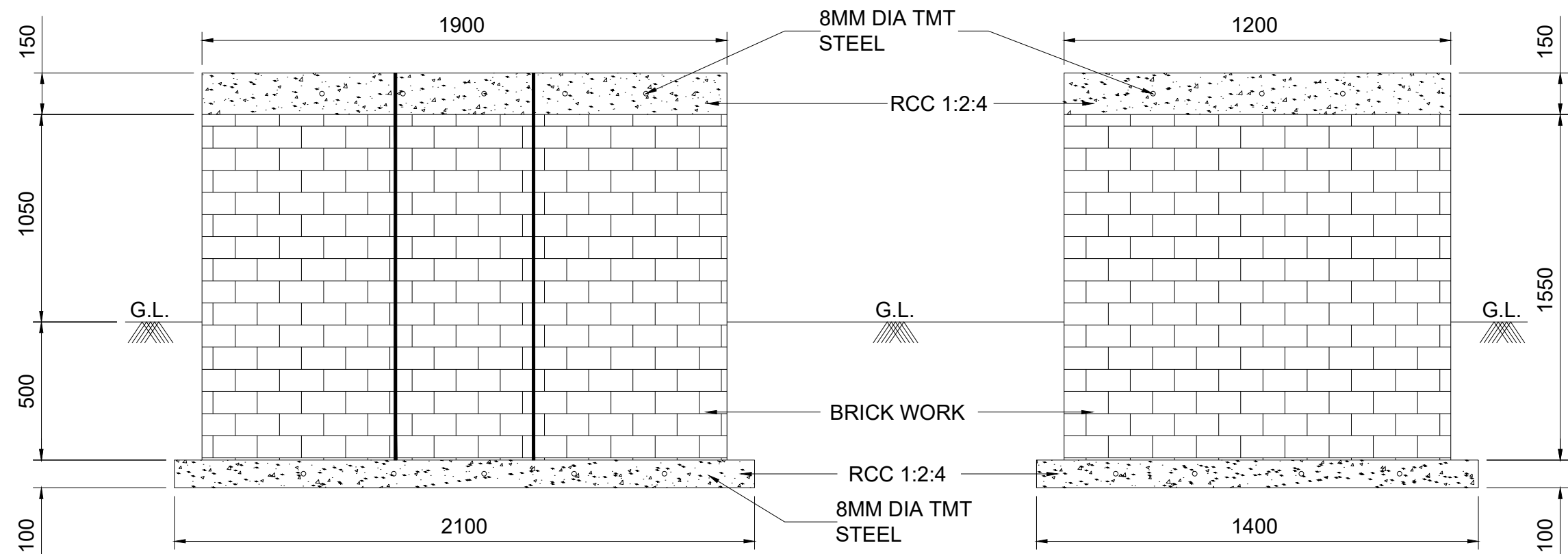
Uttar Gujarat Vij Company Limited

CIN - U40102GJ2003SGC042906
(A subsidiary of Gujarat Urja Vikas Nigam Limited)

ROUTE MARKER INSTALLATION

SCALE : N.T.S.

SHEET :



**NOTE: COMMON PLINTH DRAWING IS FOR ALL THE CAPACITY OF TRANSFORMER.
HOWEVER, WIDTH OF PLINTH MAY VARY FOR EACH CAPACITY OF TRANSFORMER
AS PER DESIGN OF TRANSFORMER OF OEM.**



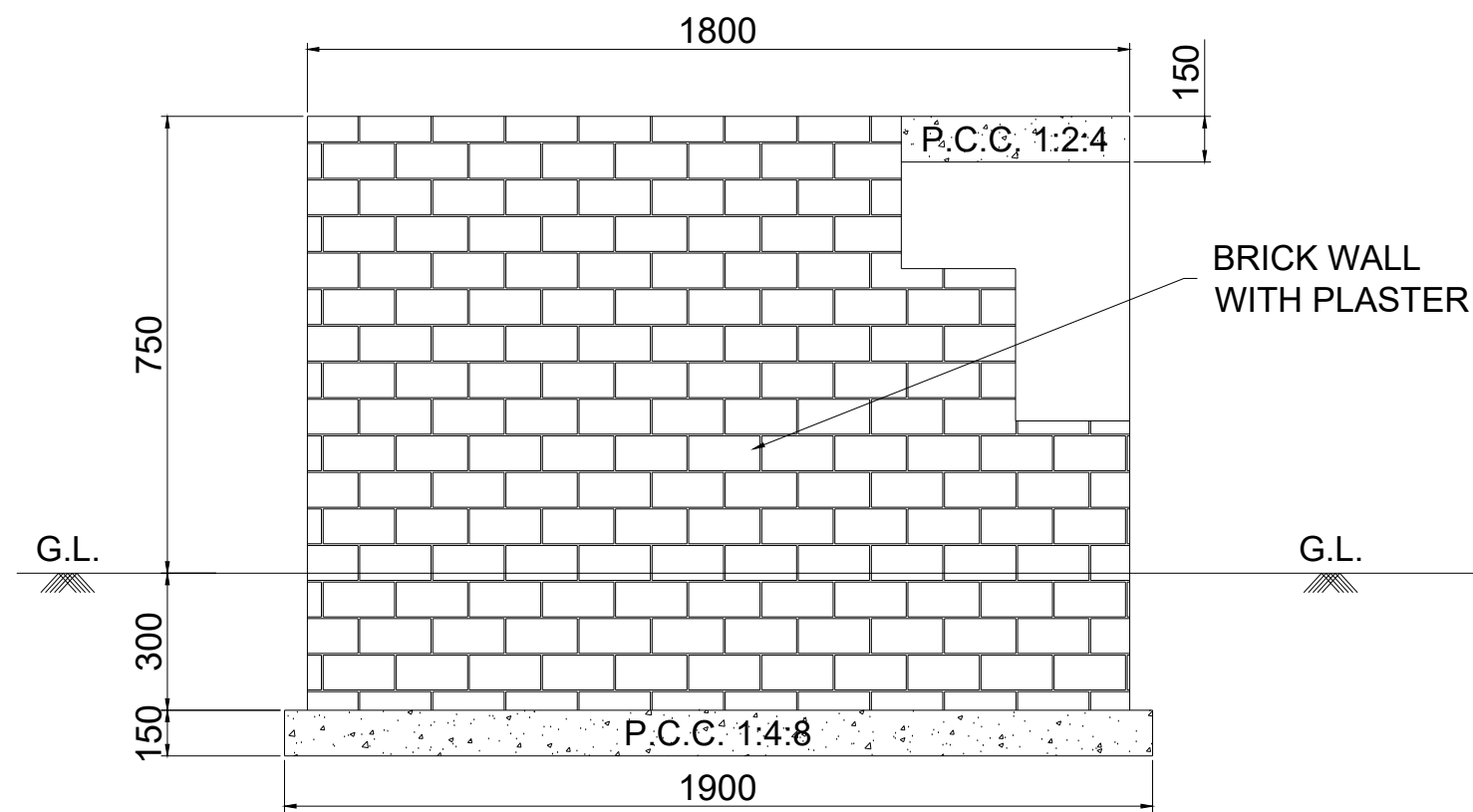
Uttar Gujarat Vij Company Limited

CIN - U40102GJ2003SGC042906
(A subsidiary of Gujarat Urja Vikas Nigam Limited)

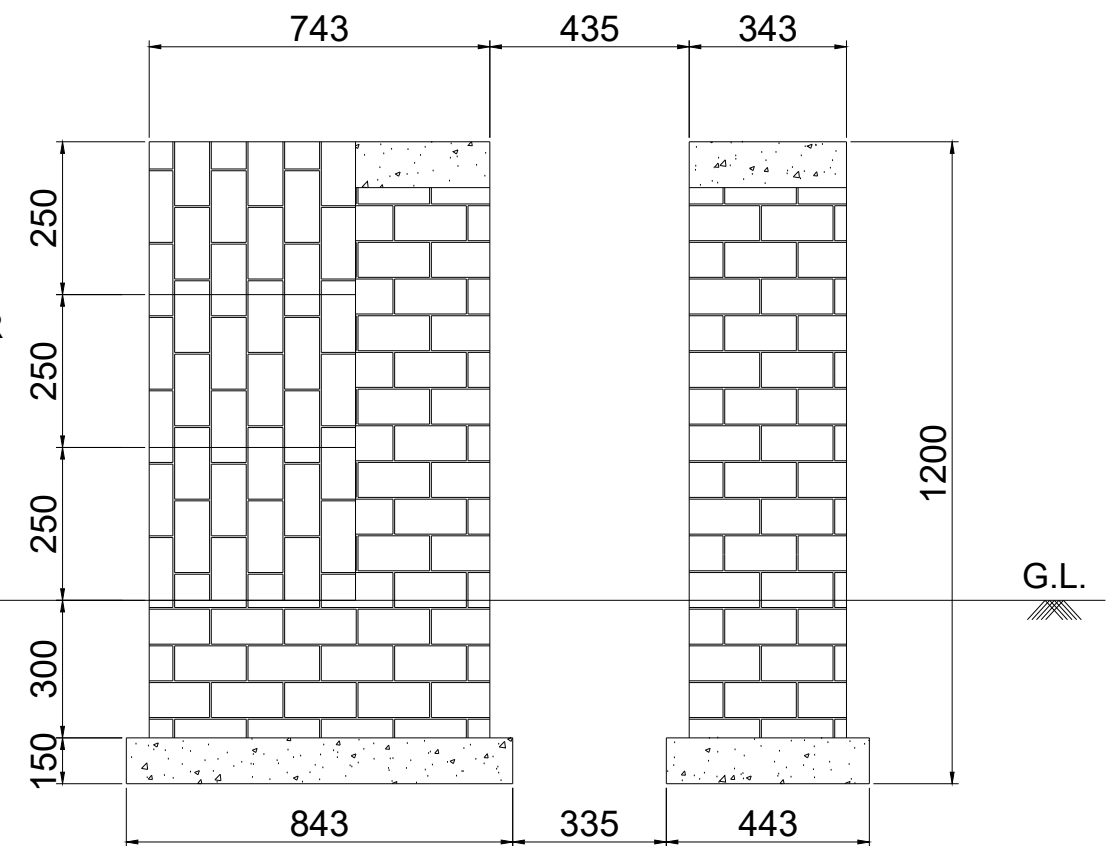
100,200,315 & 500KVA
TRANSFORMER PLINTH

SCALE : N.T.S.

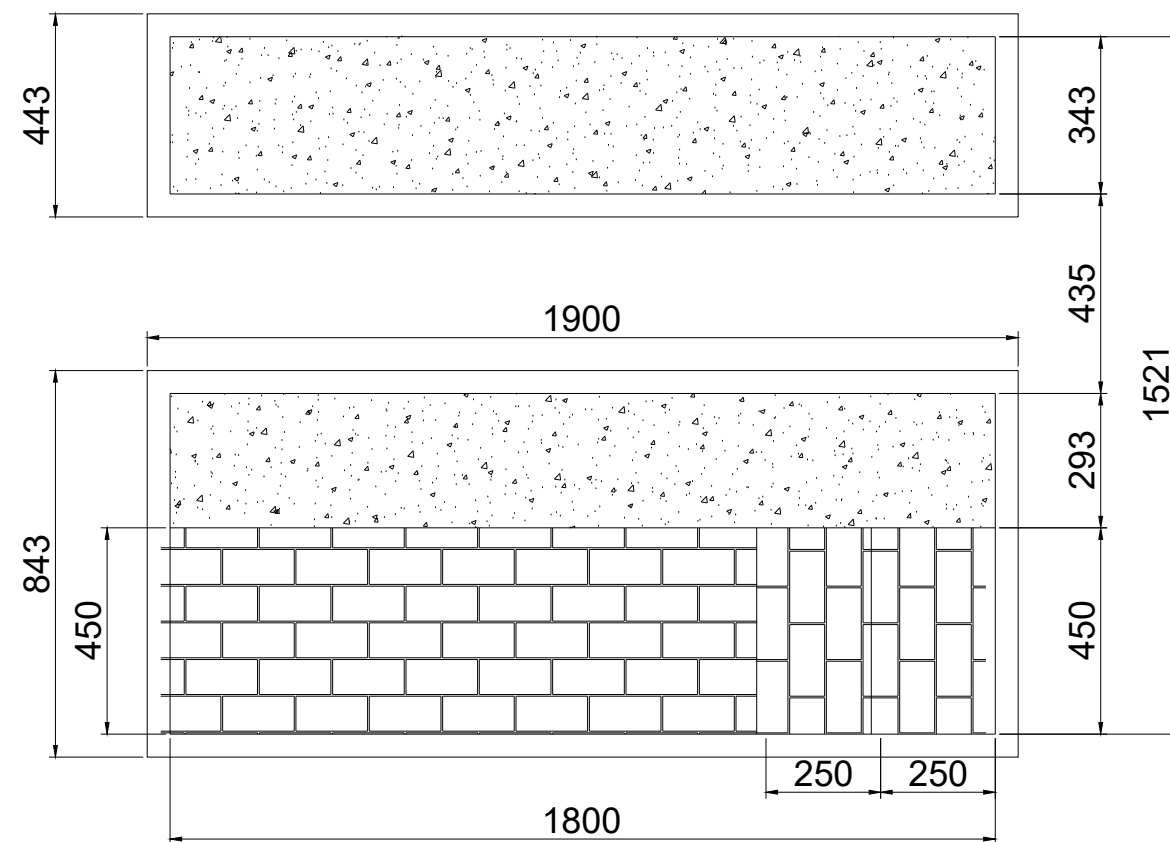
SHEET :



ELEVATION



SIDE VIEW



PLAN

NOTE : COMMON PLINTH DRAWING IS FOR ALL THE CAPACITY OF RMU.
HOWEVER, WIDTH OF PLINTH MAY VARY FOR EACH CAPACITY OF RMU
AS PER DESIGN OF RMU OF OEM.



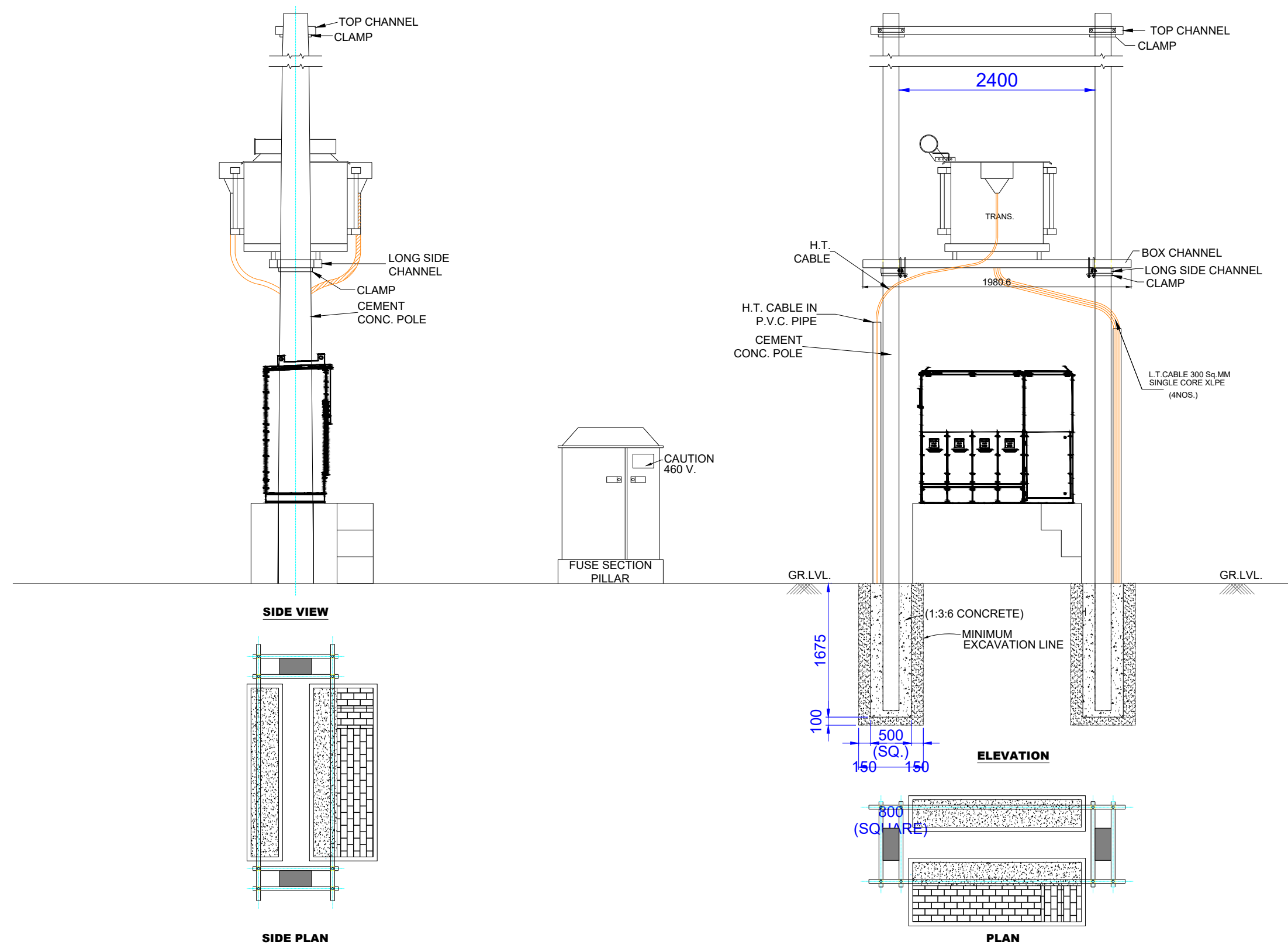
Uttar Gujarat Vij Company Limited

CIN - U40102GJ2003SGC042906
(A subsidiary of Gujarat Urja Vikas Nigam Limited)

2,3,4 & 5 WAY RMU PLINTH

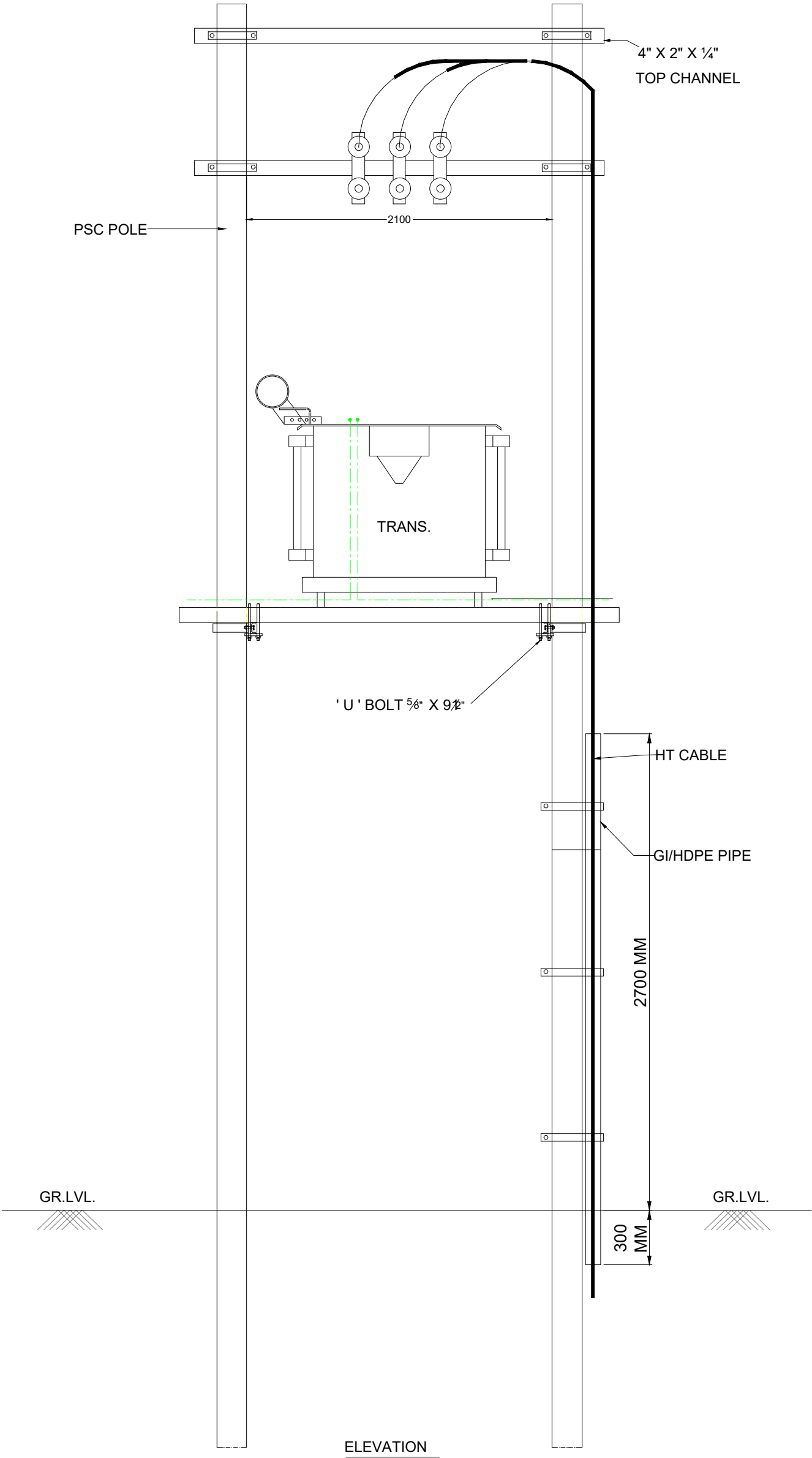
SCALE : N.T.S.

SHEET :




 <p>UGVCL</p>	<p>Uttar Gujarat Vij Company Limited</p> <p>CIN - U40102GJ2003SGC042906 (A subsidiary of Gujarat Urja Vikas Nigam Limited)</p>	
	<p>11 KV DOUBLE POLE STRUCTURE FOR RMU & TRANSFORMER</p>	
	<p>SCALE : N.T.S.</p>	<p>SHEET :</p>

HT CABLE ARRANGEMENT ON DP STRUCTURE

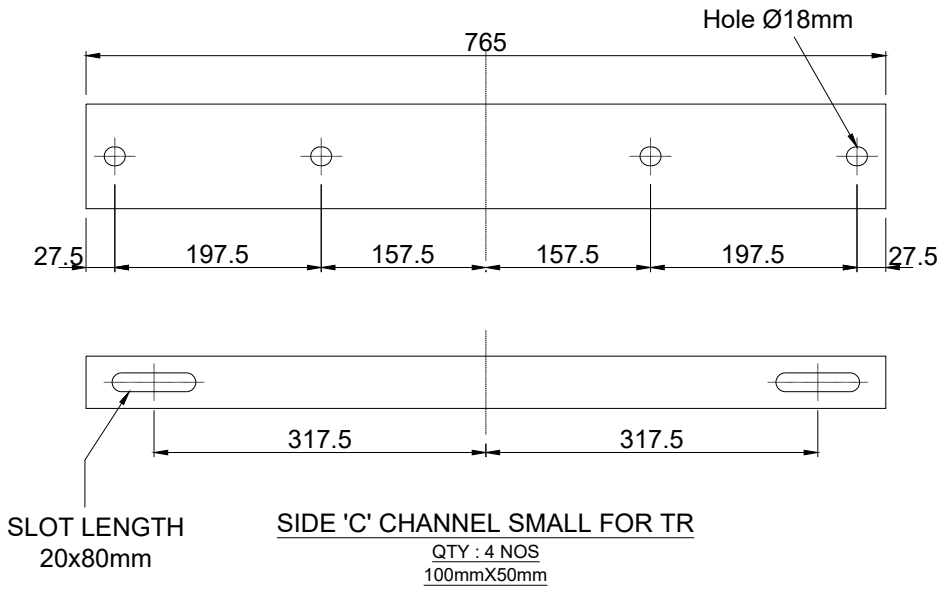
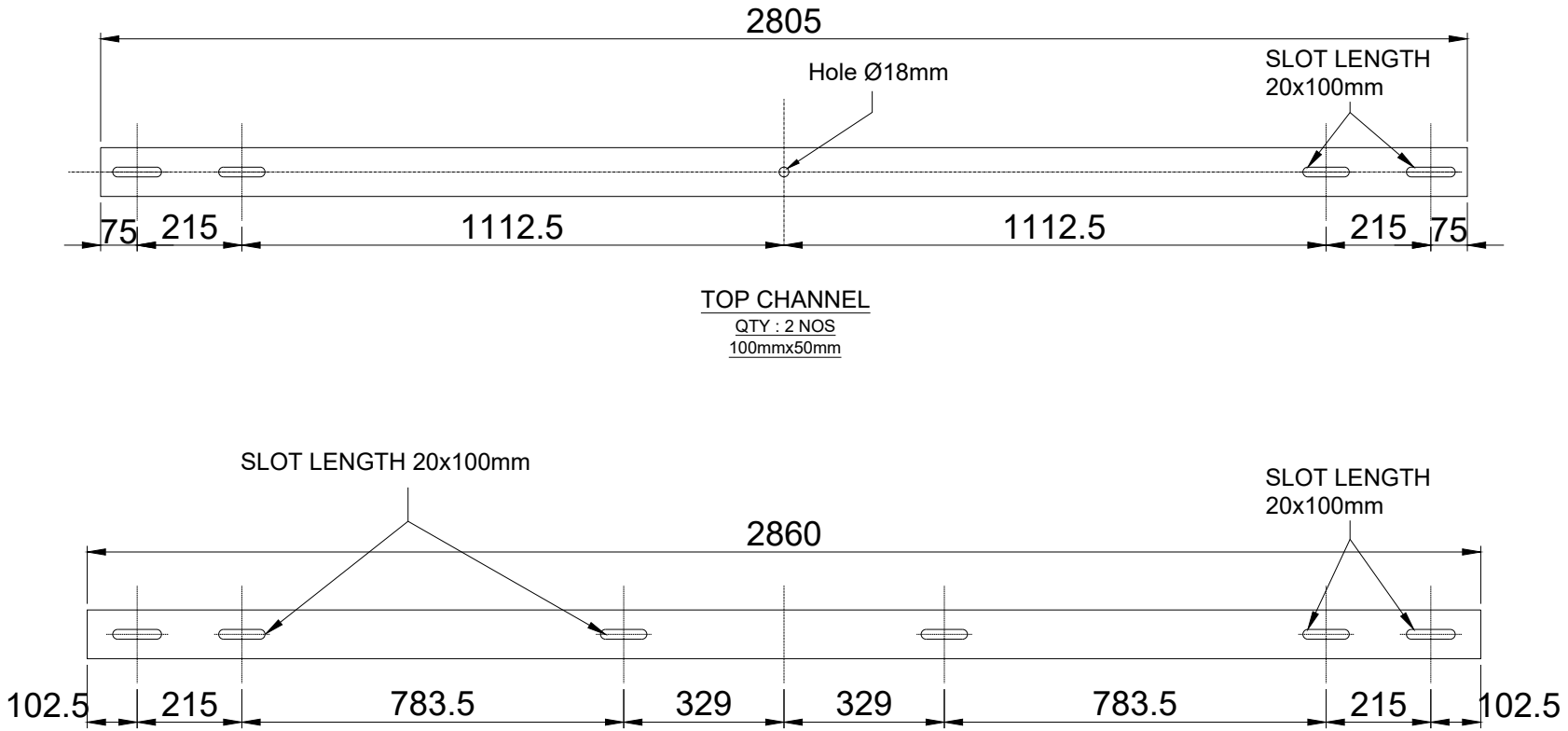
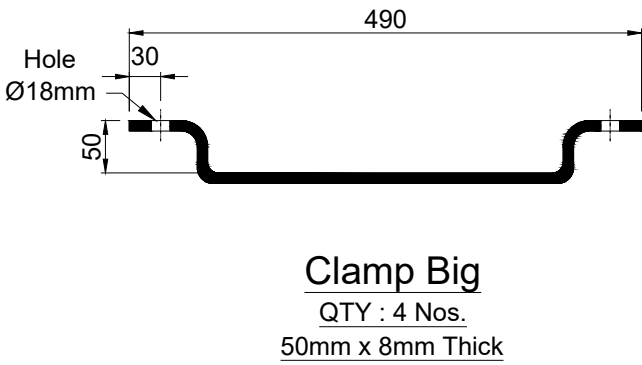
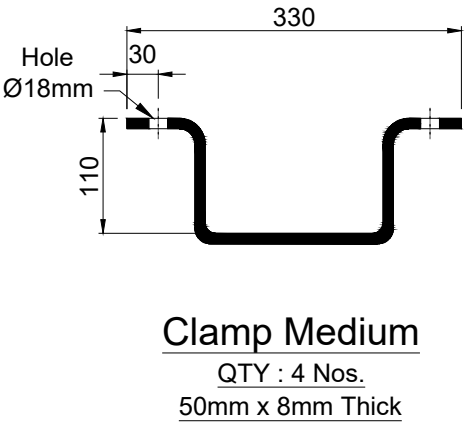
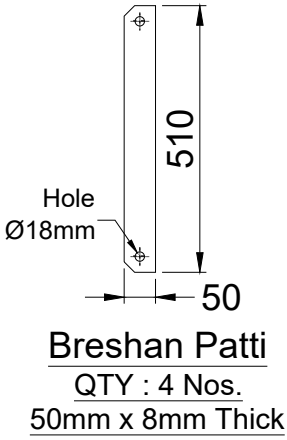


ELEVATION

ALL DIMENSIONS ARE IN MM

	Uttar Gujarat Vij Company Limited <small>CIN - U40102GJ2003SGC042906 (A subsidiary of Gujarat Urja Vikas Nigam Limited)</small>
	DOUBLE POLE STRUCTURE
SCALE : N.T.S.	SHEET :

SR. NO.	HEX NUT BOLT	QTY
1	10" X 5/8"	8 Nos.
2	8" X 5/8"	17 Nos.
3	6" X 5/8"	8 Nos.



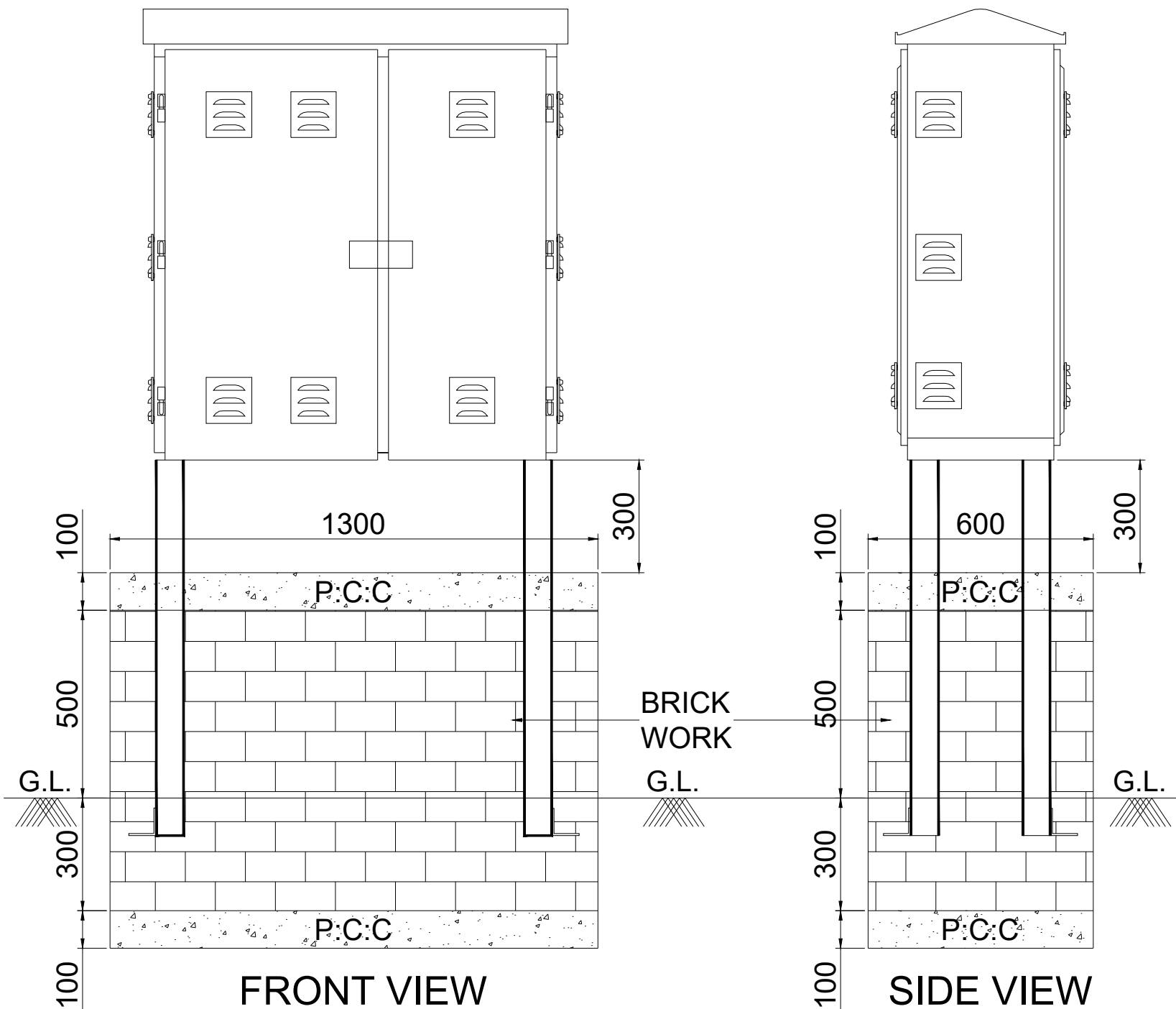
Uttar Gujarat Vij Company Limited

CIN - U40102GJ2003SGC042906
(A subsidiary of Gujarat Urja Vikas Nigam Limited)


DP STRUCTURE ACCESSORIES

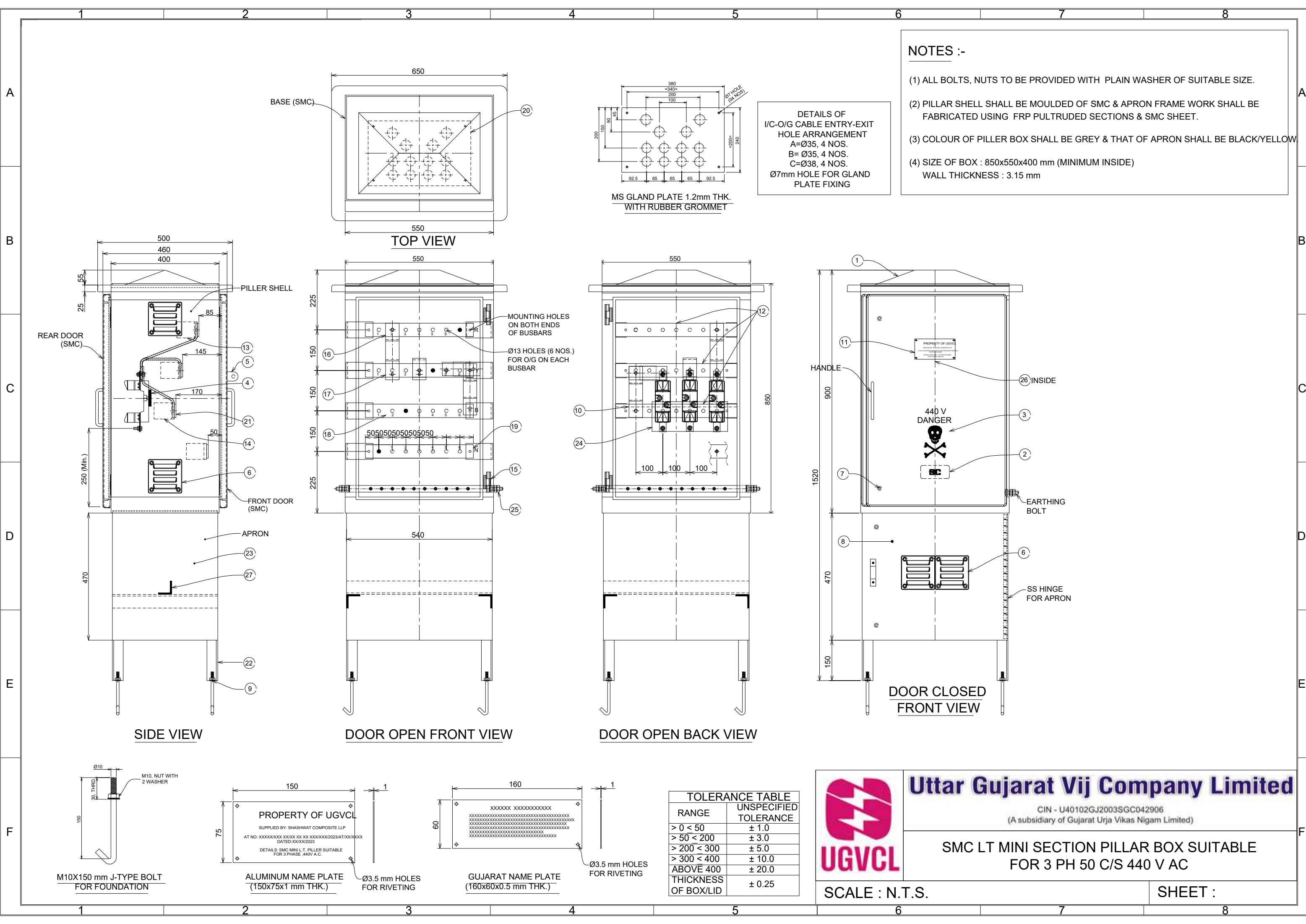
SCALE : N.T.S.

SHEET :



NOTE: BASE FRAME OF FSP SHALL BE 300MM HEIGHT AND THE SAME SHALL BE FITTED ON PLINTH, MINOR HEIGHT OF PLINTH MAY BE INCREASED IN WATER LOGGING AREA AS PER INSTRUCTION OF ENGINEER-IN-CHARGE.

	Uttar Gujarat Vij Company Limited CIN - U40102GJ2003SGC042906 (A subsidiary of Gujarat Urja Vikas Nigam Limited)
	FSP PLINTH
SCALE : N.T.S.	
SHEET :	



NOTES :-

- (1) ALL BOLTS, NUTS TO BE PROVIDED WITH PLAIN WASHER OF SUITABLE SIZE.
- (2) PILLAR SHELL SHALL BE MOULDED OF SMC & APRON FRAME WORK SHALL BE FABRICATED USING FRP PULTRUDED SECTIONS & SMC SHEET.
- (3) COLOUR OF PILLER BOX SHALL BE GREY & THAT OF APRON SHALL BE BLACK/YELLOW.
- (4) SIZE OF BOX : 850x550x400 mm (MINIMUM INSIDE)
WALL THICKNESS : 3.15 mm

DETAILS OF
I/C-O/G CABLE ENTRY-EXIT
HOLE ARRANGEMENT
A=Ø35, 4 NOS.
B= Ø35, 4 NOS.
C=Ø38, 4 NOS.
Ø7mm HOLE FOR GLAND
PLATE FIXING

MS GLAND PLATE 1.2mm THK.
WITH RUBBER GROMMET

DOOR CLOSED
FRONT VIEW

TOLERANCE TABLE	
RANGE	UNSPECIFIED TOLERANCE
> 0 < 50	± 1.0
> 50 < 200	± 3.0
> 200 < 300	± 5.0
> 300 < 400	± 10.0
ABOVE 400	± 20.0
THICKNESS OF BOX/LID	± 0.25




Uttar Gujarat Vij Company Limited

CIN - U40102GJ2003SGC042906
(A subsidiary of Gujarat Urja Vikas Nigam Limited)

SMC LT MINI SECTION PILLAR BOX SUITABLE
FOR 3 PH 50 C/S 440 V AC

SCALE : N.T.S.

SHEET :

	1	2	3	4	5	6	7	8															
A																							
B	LEGEND																						
	SR. NO.	DESCRIPTION																					
	1	SLANTING ROOF TOP TO BE BOLTED IN SUCH WAY THAT DOORS CANNOT BE REMOVE																					
	2	MANUFACTURER'S NAME ON THE DOOR (EMBOSSED/PRINTED)																					
	3	DANGER SYMBOL																					
C	4	SMC FLAT 500X60X10mm FOR FUSE MOUNTING																					
	5	PADLOCKING WITH Ø16mm HOLE.																					
	6	SMC VENTILATION LOUVERS WITH STAINLESS STEEL WIRE MESH INSIDE (2 NOS ON EACH DOOR AND 2 NOS ON APRON FRONT = TOTAL 06 NOS)																					
	7	PANEL TYPE LOCKING DEVICE ON FRONT AND BACK DOOR - 2 NOS. EACH WITH KEY																					
	8	FOUR SIDE BOTTOM COVERS OF 3mm SMC SHEET. THE FRONT COVER FIXED BY HEAVY DUTY SS HINGES EACH COVERS HAVING SMC LOUVERS WITH STAINLESS STEEL MESH INSIDE BOLTED ARRANGEMENT PROVIDING FOR FIXING BOTH SIDE COVERS																					
	9	FOUR NOS. HOLES Ø11mm SUITABLE FOR Ø10mm J-TYPE FOUNDATION BOLTS																					
	10	400A FUSE BASE WITH 200A FUSE LINK FOR 100 KVA & 315A FOR 200 KVA																					
	11	INDELLIBLE PRINTING ALLU. NAME PLATE 150X75X1 mm ON BOTH DOOR.																					
	12	TINNED COPPER BUS BAR FOR INCOMING SUPPLY SIZE 50x6mm OF SUITABLE LENGTH FOR R,Y, B PHASE																					
	13	FRP PULTRUDED ANGLE FOR BUSBAR FIXING 75X60X10 mm																					
D	14	SMC/DMC BASE FOR MOUNTING BUS BARS BRACKET																					
	15	SS HINGES FOR EACH DOOR NON DETACHABLE TYPE (2 NOS EACH DOOR)																					
	16	EC GRADE ALUMINUM BUS BAR FOR OUTGOING SUPPLY SIZE 50x10mm AND 425mm LONG FOR 'R' PHASE																					
	17	EC GRADE ALUMINUM BUS BAR FOR OUTGOING SUPPLY SIZE 50x10mm AND 425mm LONG FOR 'Y' PHASE																					
	18	EC GRADE ALUMINUM BUS BAR FOR OUTGOING SUPPLY SIZE 50x10mm AND 425mm LONG FOR 'B' PHASE																					
	19	EC GRADE ALUMINUM BUS BAR FOR OUTGOING SUPPLY SIZE 50x10mm AND 425mm LONG FOR NEUTRAL																					
	20	GLAND PLATE OF 1.2 mm THK. M.S. SHEET WITH HOLE AND GROMMET																					
	21	M.S./SMC ('C' BRACKET) FOR MOUNTING BUS BARS SMC STRIP OF 3mm THICK																					
	22	50x50x6mm THICK (MINIMUM) SMC ANGLE FRAME FOR PADESTAL ONLY WITH J-TYPE MS/GI FOUNDATION BOLT																					
	23	BOLTED COVER OF 3mm SMC SHEET FIXED TO BOTH SIDE																					
E	24	SMC SHEET FOR PARTITION 280X110X3mm																					
	25	GI EARTHING BOLT M12X20mm WITH 2 NUT, 2 WASHER & 1 SPRING WASHER FITTED WITH ALLU. EARTHING STRIP 25X3mm THK. WHICH HAVING M6X25mm BOLT - 10 NOS																					
	26	ALLU. NAME PLATE IN GUJARATI - INSIDE THE DOOR 160X60X0.5 mm																					
	27	FRP ANGLE 50X6mm 500mmWITH HOLES FOR CABLE HOLDING CLAMP FITTING.																					
F					<table><tr><th colspan="2">TOLERANCE TABLE</th></tr><tr><th>RANGE</th><th>UNSPECIFIED TOLERANCE</th></tr><tr><td>> 0 < 50</td><td>± 1.0</td></tr><tr><td>> 50 < 200</td><td>± 3.0</td></tr><tr><td>> 200 < 300</td><td>± 5.0</td></tr><tr><td>> 300 < 400</td><td>± 10.0</td></tr><tr><td>ABOVE 400</td><td>± 20.0</td></tr><tr><td>THICKNESS OF BOX/LID</td><td>± 0.25</td></tr></table>	TOLERANCE TABLE		RANGE	UNSPECIFIED TOLERANCE	> 0 < 50	± 1.0	> 50 < 200	± 3.0	> 200 < 300	± 5.0	> 300 < 400	± 10.0	ABOVE 400	± 20.0	THICKNESS OF BOX/LID	± 0.25	<div><div>Uttar Gujarat Vij Company Limited <small>CIN - U40102GJ2003SGC042906 (A subsidiary of Gujarat Urja Vikas Nigam Limited)</small></div></div> <div>SMC LT MINI SECTION PILLAR BOX SUITABLE FOR 3 PH 50 C/S 440 V AC</div> <div>SCALE : N.T.S.</div> <div>SHEET :</div>	
	TOLERANCE TABLE																						
RANGE	UNSPECIFIED TOLERANCE																						
> 0 < 50	± 1.0																						
> 50 < 200	± 3.0																						
> 200 < 300	± 5.0																						
> 300 < 400	± 10.0																						
ABOVE 400	± 20.0																						
THICKNESS OF BOX/LID	± 0.25																						
1	2	3	4	5	6	7	8																

TOLERANCE TABLE	
RANGE	UNSPECIFIED TOLERANCE
> 0 < 50	± 1.0
> 50 < 200	± 3.0
> 200 < 300	± 5.0
> 300 < 400	± 10.0
ABOVE 400	± 20.0
THICKNESS OF BOX/LID	± 0.25



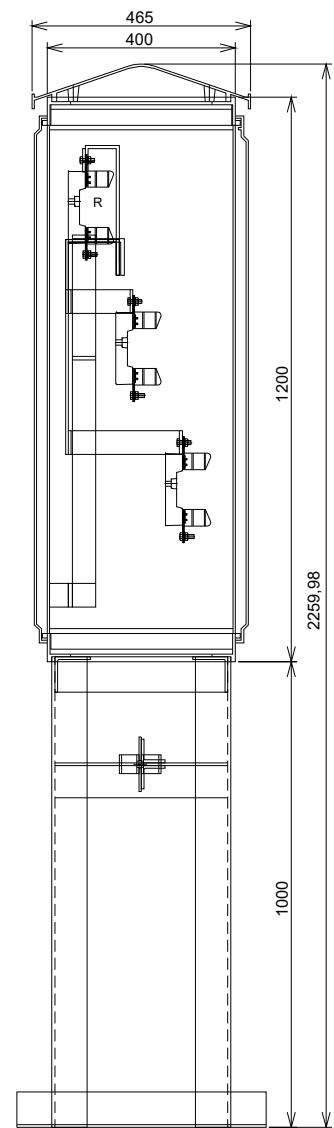
Uttar Gujarat Vij Company Limited

CIN - U40102GJ2003SGC042906
(A subsidiary of Gujarat Urja Vikas Nigam Limited)

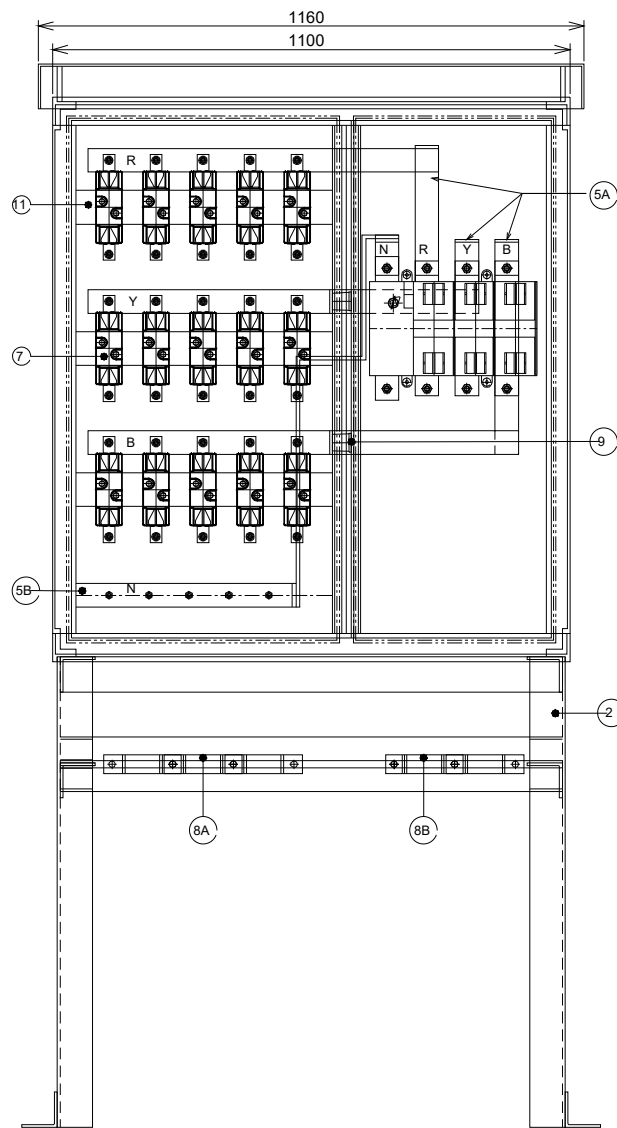
SMC LT MINI SECTION PILLAR BOX SUITABLE
FOR 3 PH 50 C/S 440 V AC

SCALE : N.T.S.

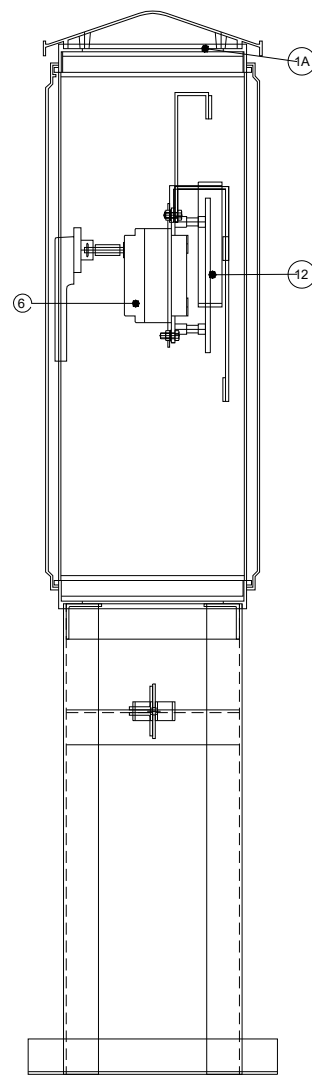
SHEET :



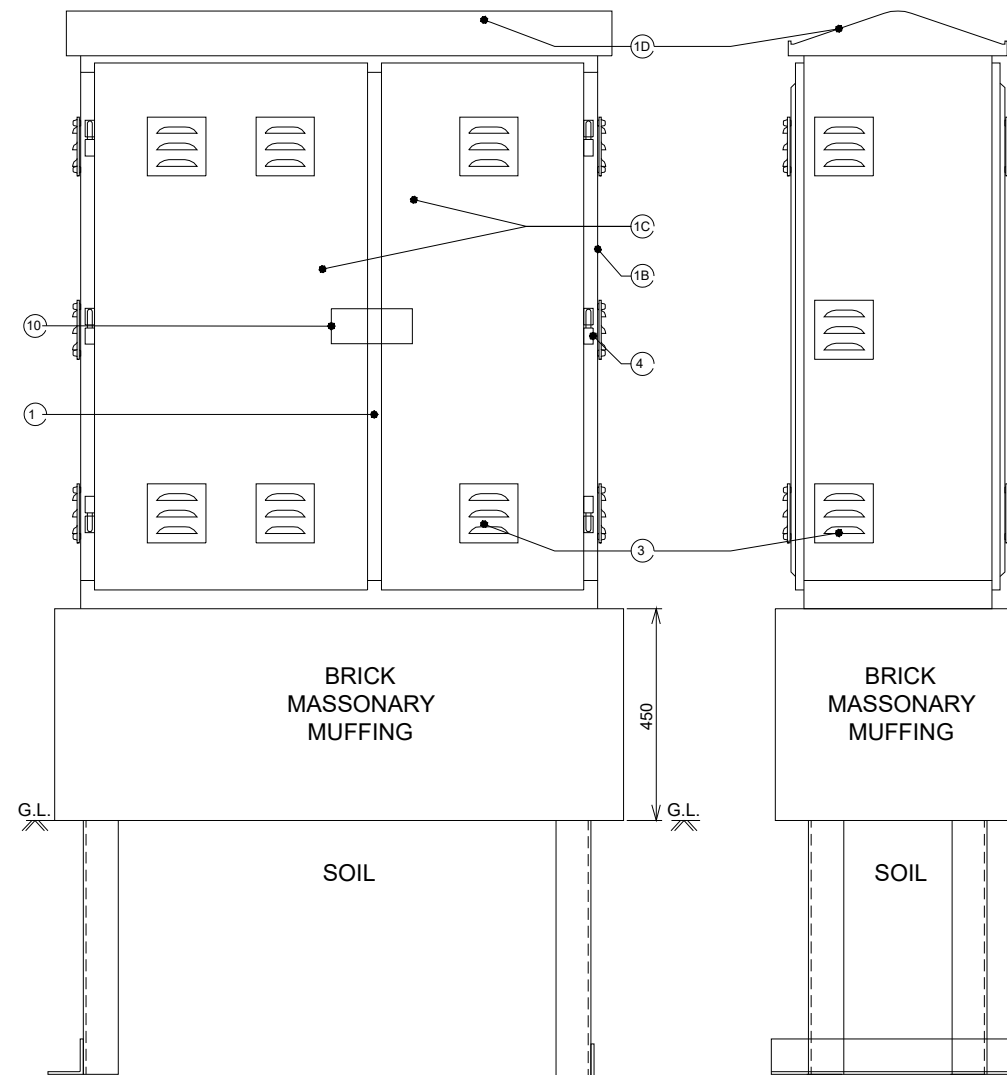
L.H. SIDE VIEW
(SIDE PANEL REMOVED)



DOOR OPEN VIEW



R.H. SIDE VIEW
(SIDE PANEL REMOVED)



FRONT VIEW

R.H. SIDE VIEW

SR.NO.	DISCRIPTION		SIZE / RATING	QUANTITY
1	MODULAR CONSTRUCTION BODY (PILLAR SHELL) MADE OUT OF FIBERGLASS REINFORCED THERMOSETTING PLASTIC. THICKNESS 4 mm.		1200 X 1100 X 400 mm	1 NO
	A. BOTTOM FRAME & TOP FRAME (1 NO. EACH)			
	B. SIDE PANELS - 2 NOS. (LEFT & RIGHT)			
	C. DOOR - BIG & SMALL (FRONT & BACK) - 2 NOS. EACH			
	D. CANOPY - 1 NO.			
2	BASE FRAME WITH APRON - MADE OUT OF FIBERGLASS REINFORCED THERMOSETTING PLASTIC.		1000 mm HEIGHT	1 NO
3	VENTILATION LOUVERS		AS SHOWN IN DRAWING	-
4	HINGES		AS PER MFG. DESIGN	-
5	EC GRADE TINNED ALUMINIUM BUSBAR DULY INSULATED	A. PHASE (R,Y,B)	63 X 10 mm	-
		B. NEUTRAL	63 X 10 mm	-
6	TPN SWITCH FUSE UNIT, MAKE INDO ASIAN/GERARD/EQUIVALENT DGVCCL APPROVED		800 A	1 NO
7	HRC FUSE BASE FOR KNIFE TYPE HRC FUSE LINKS		150A	15 NOS
8	A. CABLE CLAMP MADE OUT MS FLAT, SLIDING IN SLOT	O/G 31½ CORE CABLE	40X5X165, R42 mm	5 NOS
	B. CABLE CLAMP MADE OUT SMC/M.S.	I/C 1 CORE CABLE X 4	375X65X45 mm	1 NO
9	SUPPORT INSULATOR OF DMC		-	8 NOS (MIN.)
10	LOCKING & CLOSING ARRANGEMENT (FRONT & BACK)		-	2 NOS
11	FUSE BASE MOUNTING PLATE WITH 5X2 HOLES, Ø11 @ 30X25 C/C, 70 mm C/C (MIN.) INTERVAL		-	3 NOS
12	LT SWITCH MOUNTING PLATE		-	1 NO



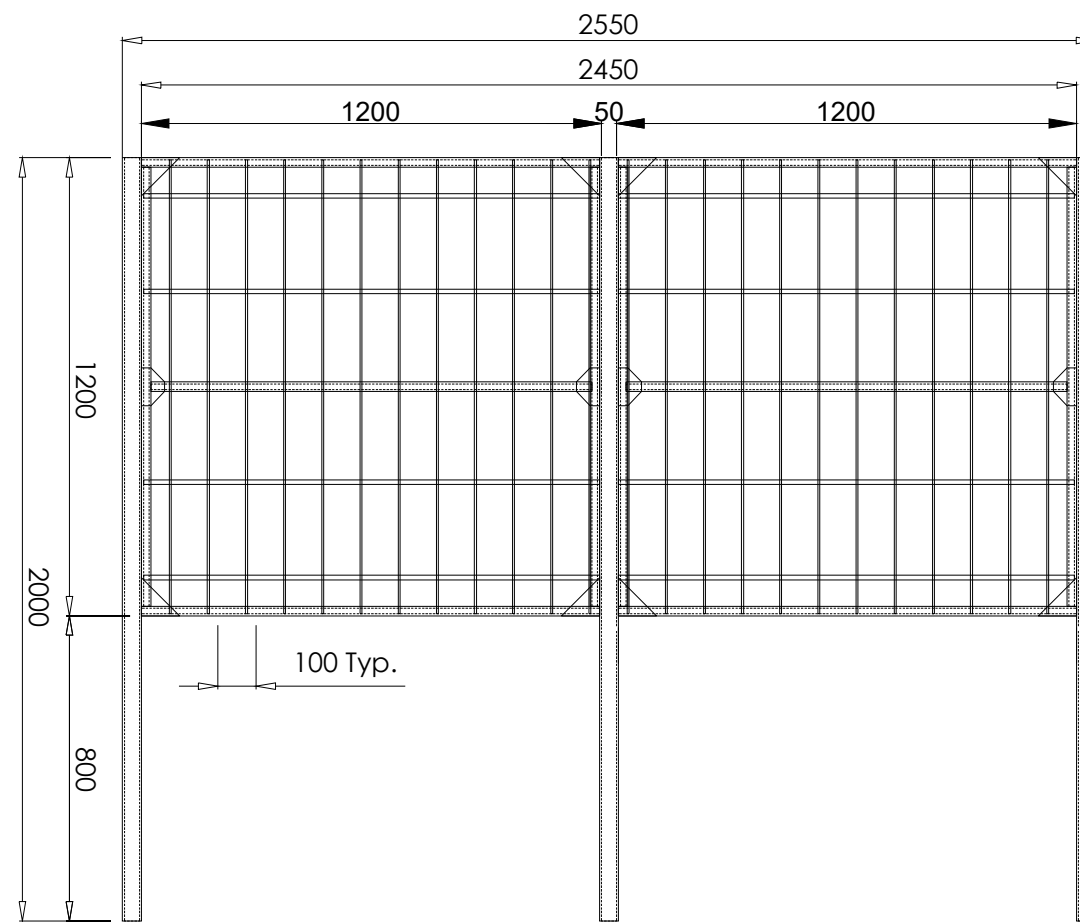
Uttar Gujarat Vij Company Limited

CIN - U40102GJ2003SGC042906
(A subsidiary of Gujarat Urja Vikas Nigam Limited)

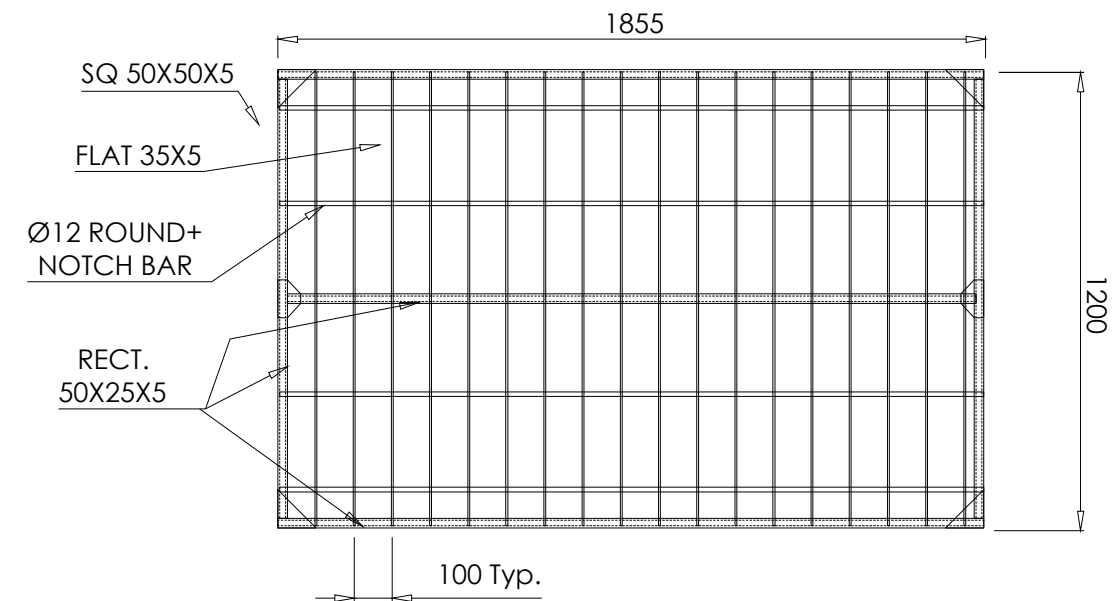
FRP PILLAR BOX (1200X1100X400MM)

SCALE : N.T.S.

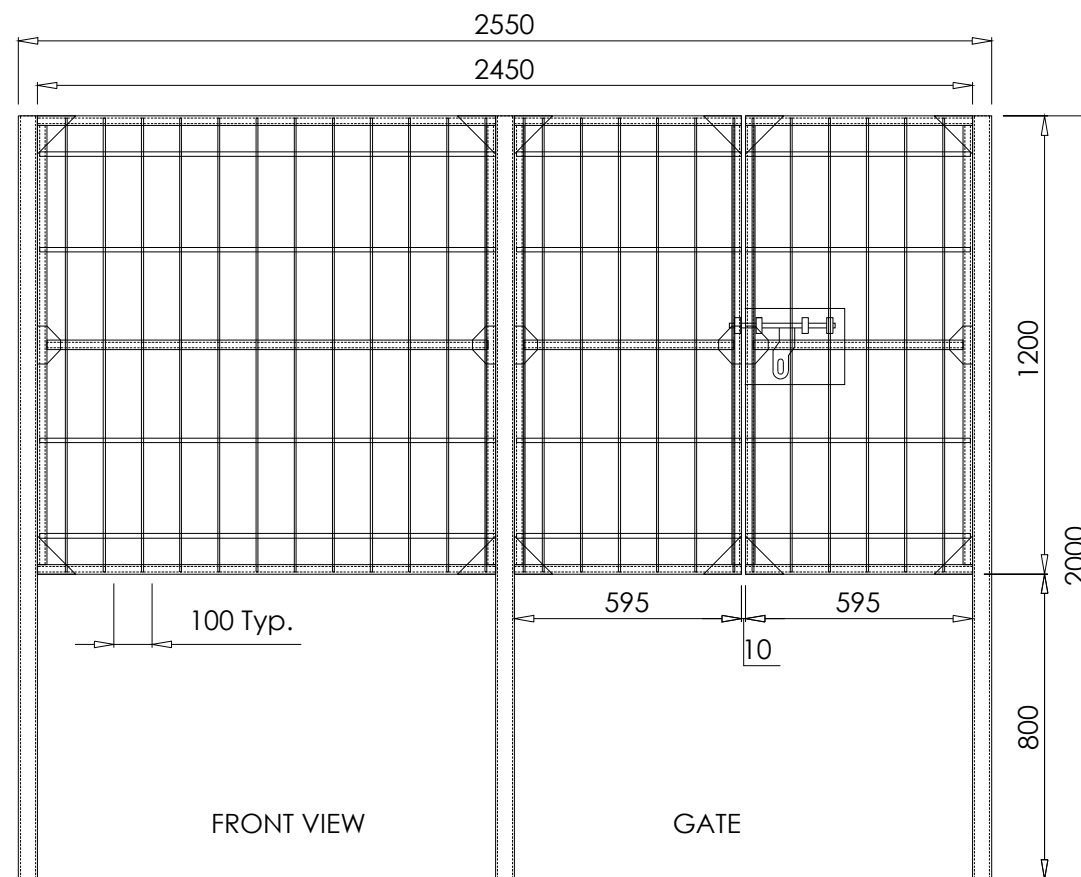
SHEET :



BACK SIDE VIEW

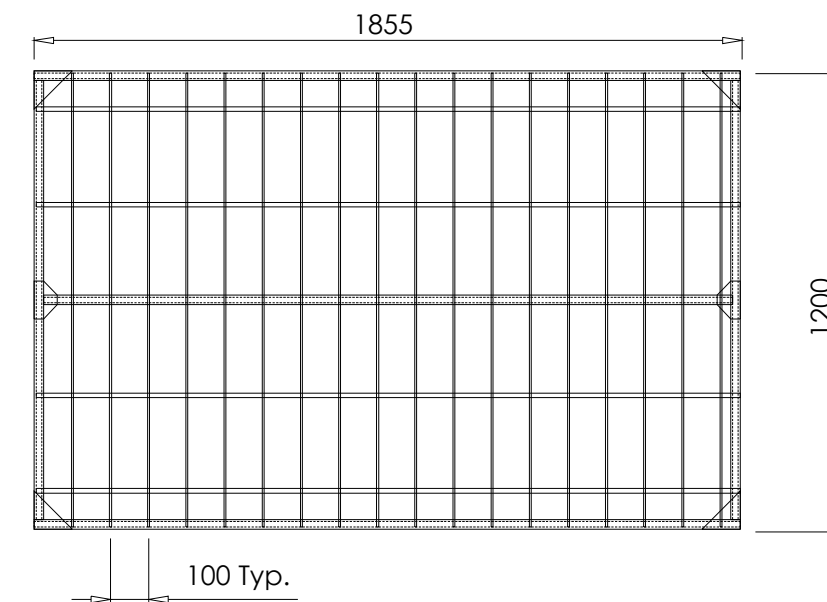


L.H. SIDE VIEW



FRONT VIEW

GATE



R.H. SIDE VIEW

NOTE:

1. ALL DIMENSIONS ARE IN MM UNLESS OTHERWISE SPECIFIED.
2. COMMON FENCING DRAWING FOR ALL TYPES OF RMU AND DP STRUCTURE. HOWEVER, HEIGHT MAY BE VARY AS PER DESIGN OF RMU AS PER OEM AND AS PER SITE SITUATION OF DP STRUCTURE.



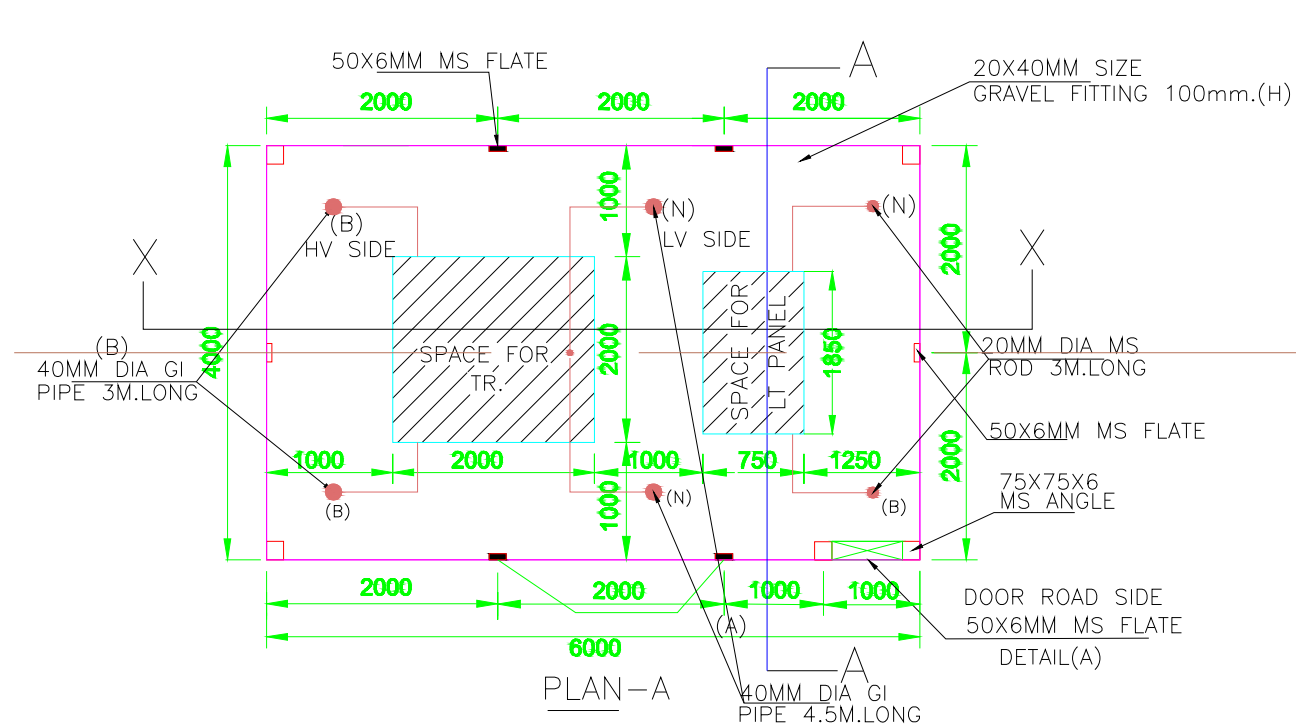
Uttar Gujarat Vij Company Limited

CIN - U40102GJ2003SGC042906
(A subsidiary of Gujarat Urja Vikas Nigam Limited)

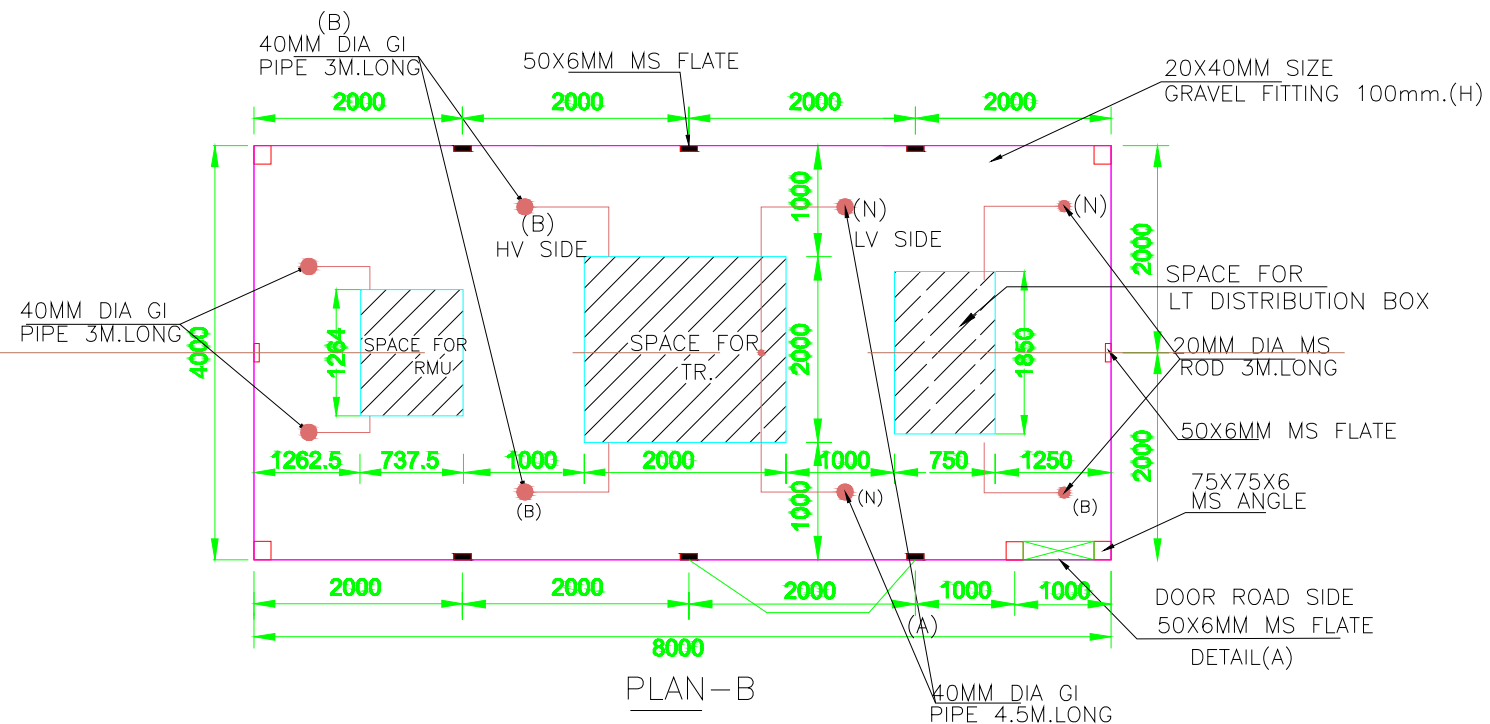
**RMU & DP STRUCTURE
FRP FENCING**

SCALE : N.T.S.

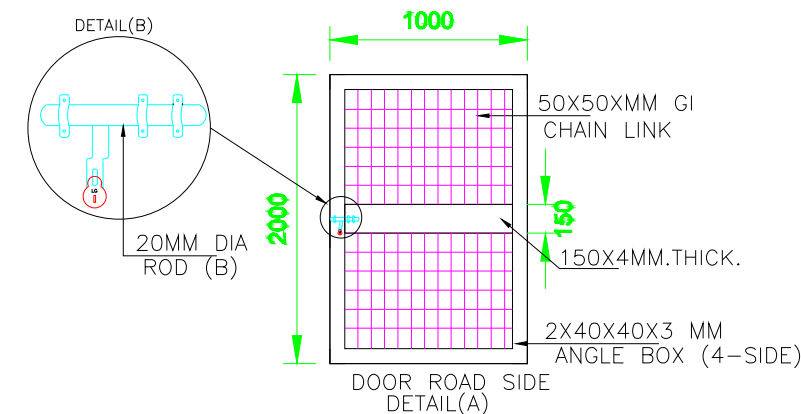
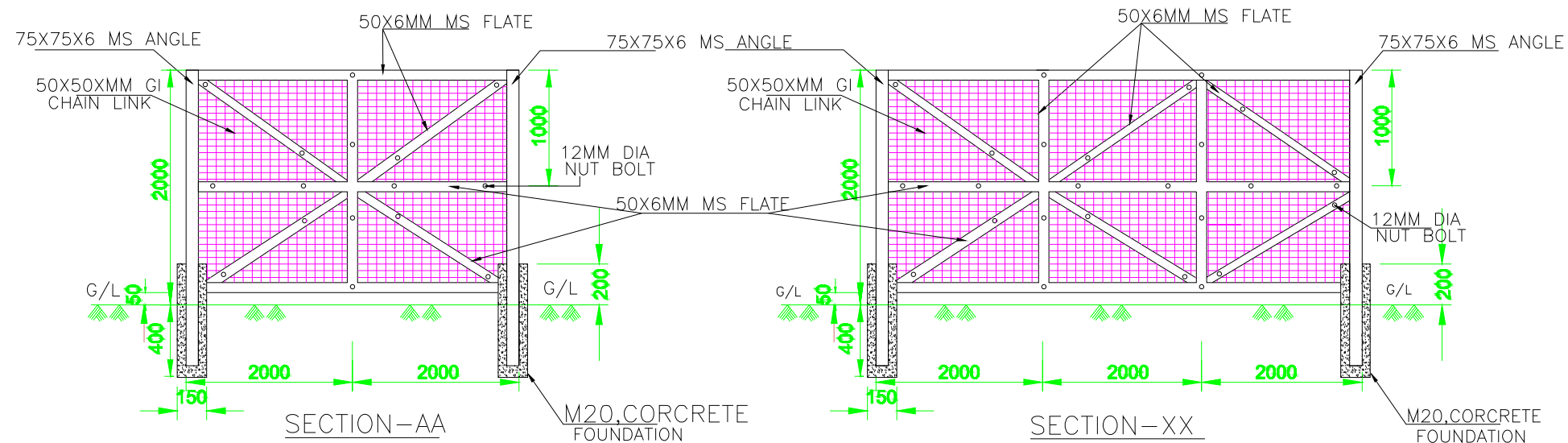
SHEET :



FANCING WITH TR/LT PANEL



FANCING WITH RMU/TR/LT PANEL



TYPICAL FENCING DETAILS



Uttar Gujarat Vij Company Limited

CIN - U40102GJ2003SGC042906
(A subsidiary of Gujarat Urja Vikas Nigam Limited)

TYPICAL DRAWING FOR EQUIPMENT CHAINLINK
FENCING & FOUNDATION DETAIL

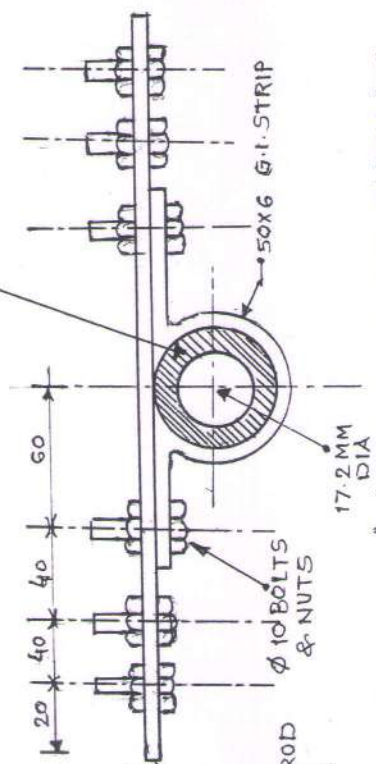
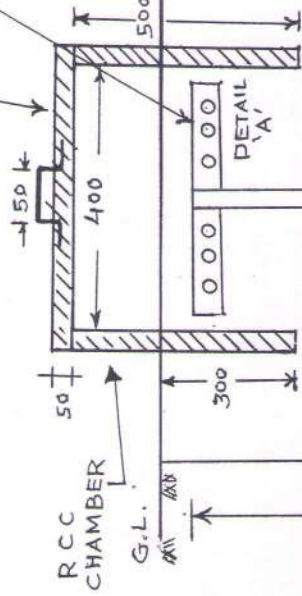
SCALE : N.T.S.

SHEET :

RCC CHAMBA CANEL

50x6 MM G.I. STRIP CLAMP WITH 3 NOS. 12x25 BOLTS & NUTS ON BOTH SIDE.

(1 NO. ON BOTH SIDE FOR CLAMPING & 2 NOS FOR EXTERNAL CONNECTION BY USING 50x6 MM. G.I. STRIP.



COPPER BONDED EARTH ROD (17.2 MM X 3 MTR) OR PIPE ELECTRODE.

GROUND ENHANCING MATERIAL

100MM X 3MTR. BORE

EXISTING NORMA SOIL

AFTER FIXING SURFACE SHOULD COVERED WITH BITUMIN OR GREASE

DETAIL "A" FOR C4-BONDED EARTH ROD C FOR PIPE Electrode it may be different

Earth Pit Installation Procedure For Normal Soil for C4e bonded Earth Road. (Dia of quarry hole for other cases may be different.)

1. Augur a 100 mm. dia hole to depth upto 2850 mm.
2. Drop the earth rod down the hole with lower end centered and driven in 150 mm.
3. Fill the hole using ground Enhancement Material around the rod.
4. Allow it to dry to enable to compound to set before fixing clamp & connections.

UTTAR GUJRAT VIJ CO. LTD

CARBON EARTHING

DRG. NO. UGVCL/R&D-PP/EARTHING/001

CHECKED BY

APPROVED BY

DRAWN BY

6/12/15 ECKAD-PI

A.S. JANI. JR.D MAN